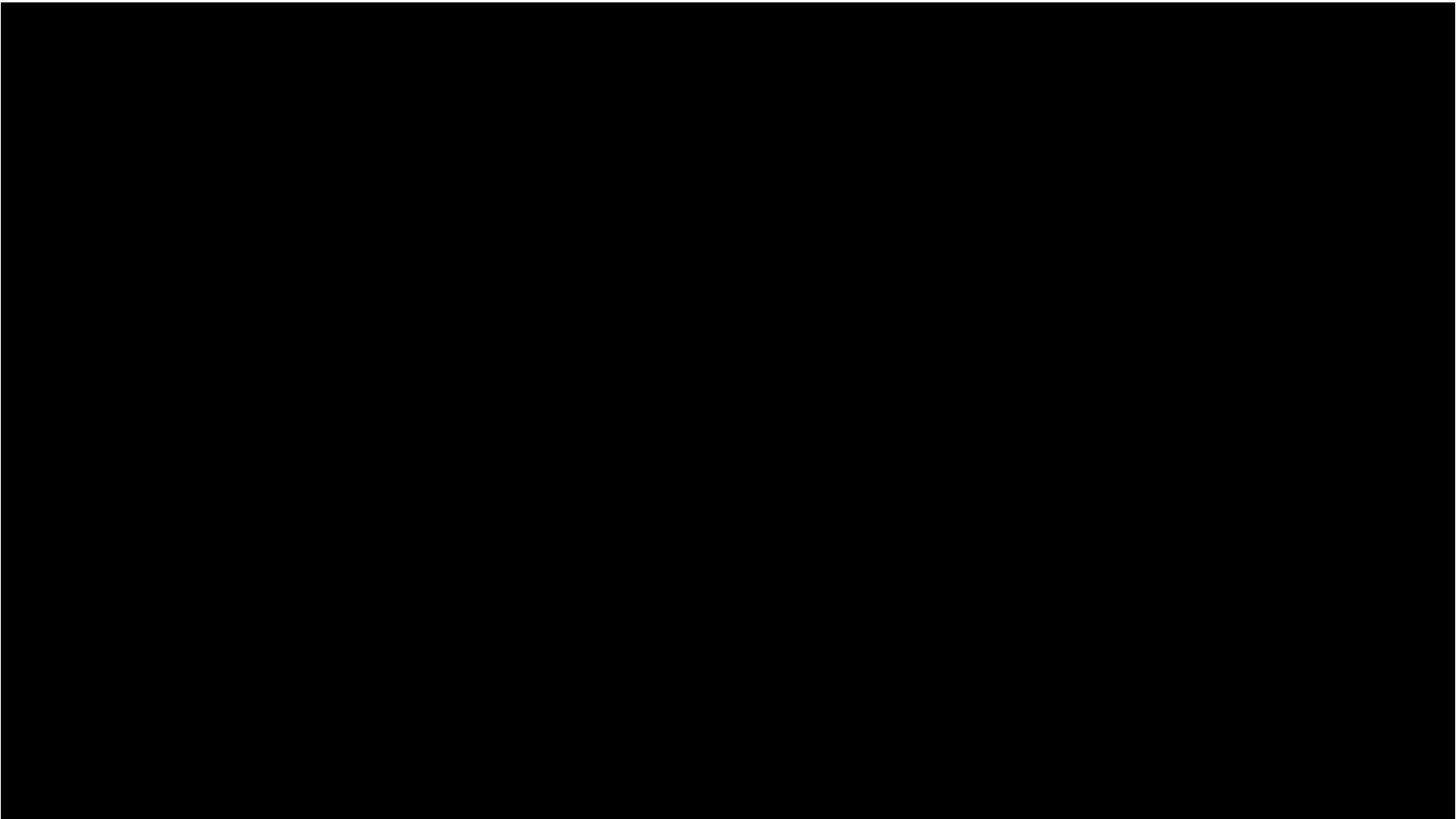




A BETTER RED

**East Portland Land Use and Transportation Meeting
July 21, 2021**



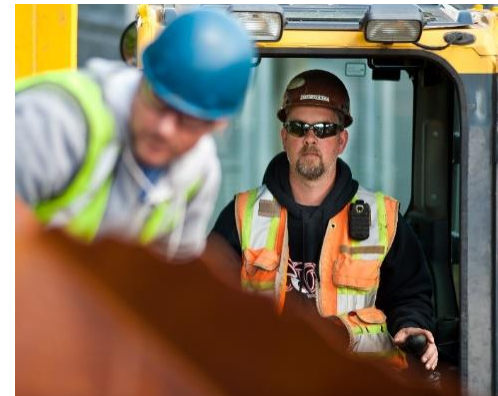
YouTube links:

English: <https://youtu.be/0udaEI7x9Y0>

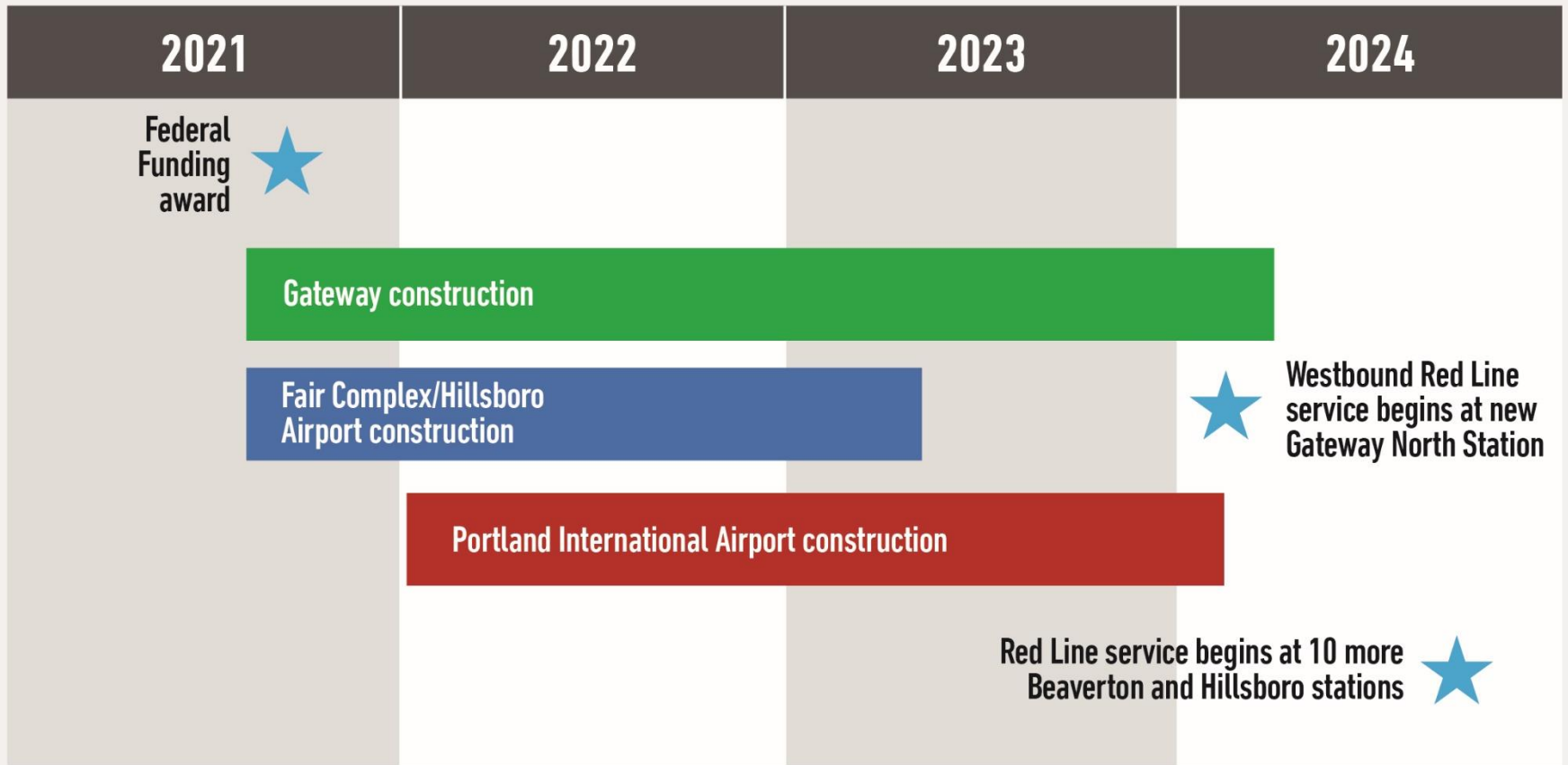
En Español: https://youtu.be/0mlb_xuY_dI

Project Benefits

- Extends MAX Red Line west to serve 10 more stations
- Improves reliability for the entire MAX system
- Adds new multi-use paths at Gateway and PDX
- Creates up to 1,200 jobs
- Includes ambitious goals for Disadvantaged Business Enterprise (DBE) contracting
- Leverages about \$100 m federal funding



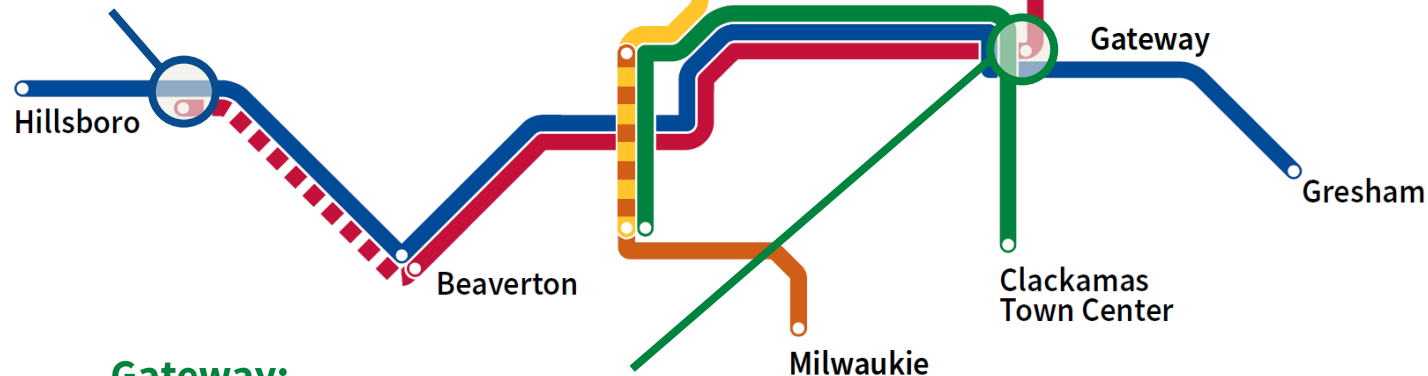
ESTIMATED PROJECT SCHEDULE



Construction Areas

Fair Complex/Hillsboro Airport Station:

- Signals and switches
- New walkway and break facility for MAX operators



PDX:

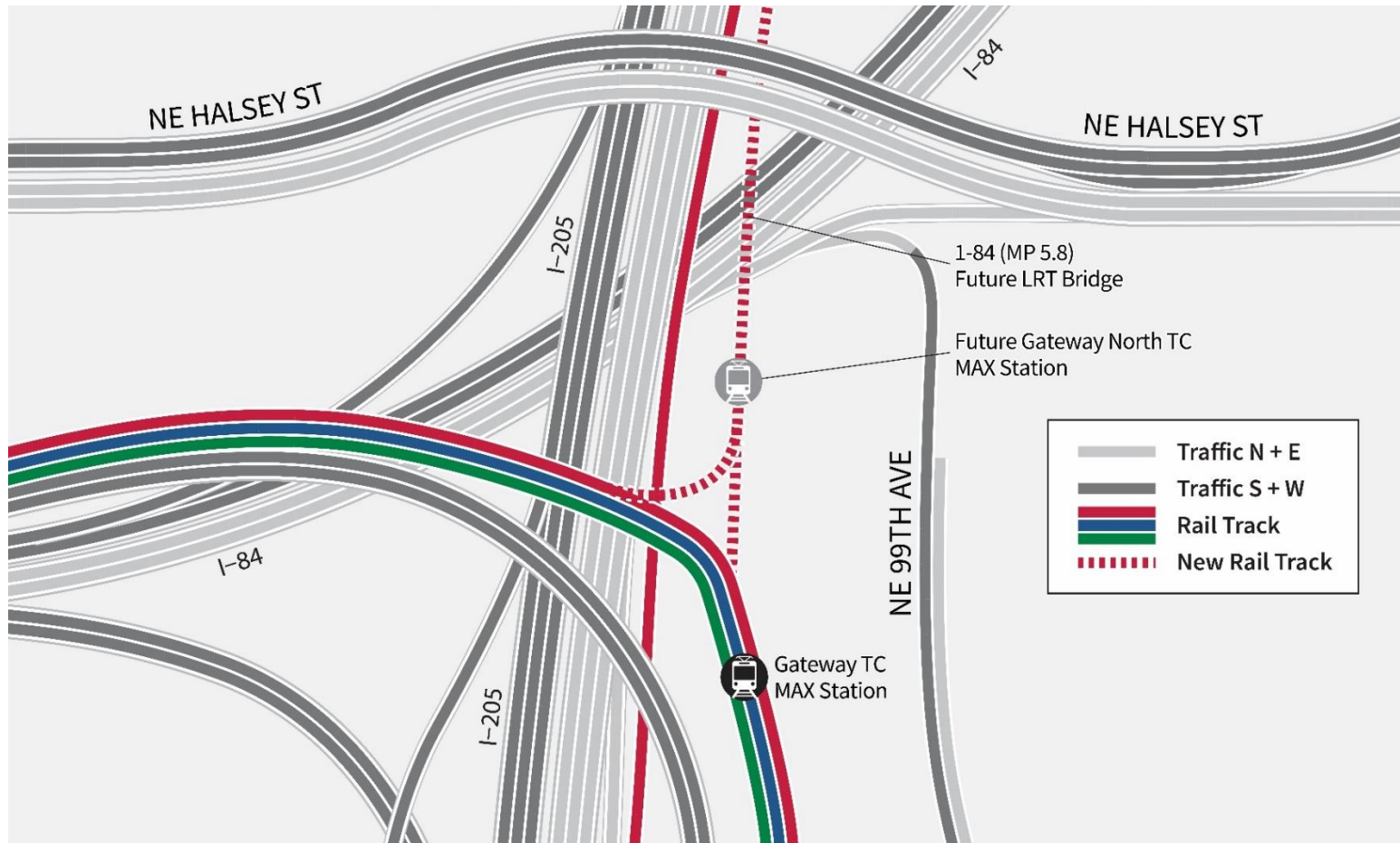
- Second track at single-track bottleneck
- Rebuild station platform
- New MUP connecting PDX to NE 82nd Way

Gateway:

- Second track at single-track bottleneck
- Two bridges:
 - Over existing MAX track and I-205 MUP
 - Over I-84 and UPRR tracks, with new MUP to Gateway Green Park
- New station platform for Red Line trains heading toward City Center

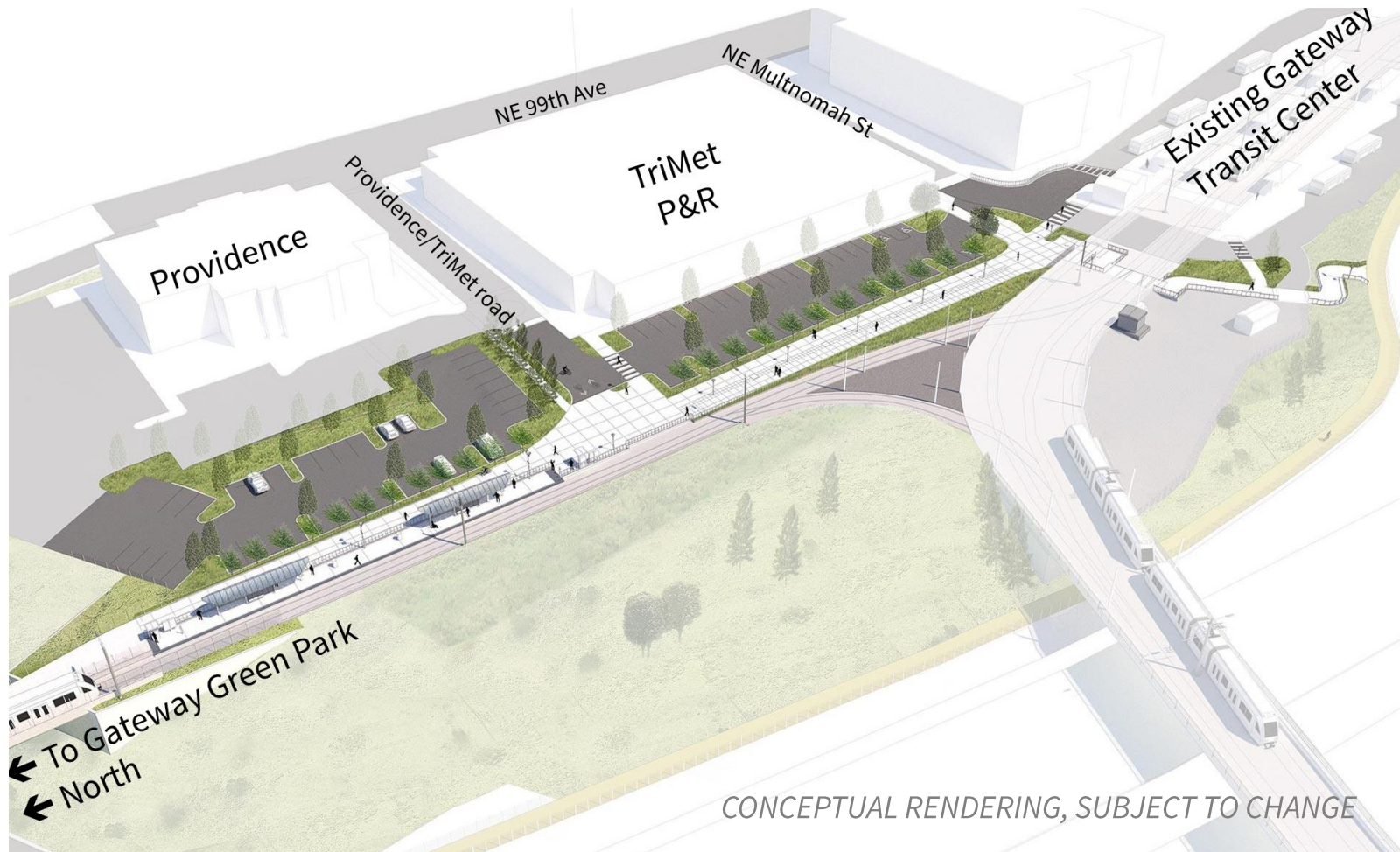
Gateway Area

Diagram of new light rail second track



Gateway Area

Aerial view of new Red Line (in-bound only) station, the existing Gateway station and the path connecting the two



Gateway Area

Aerial view of the new inbound light rail station, multi-use path, and Providence parking lot.



CONCEPTUAL RENDERING, SUBJECT TO CHANGE

Gateway Area

New light rail and multiuse path overpass over I-84



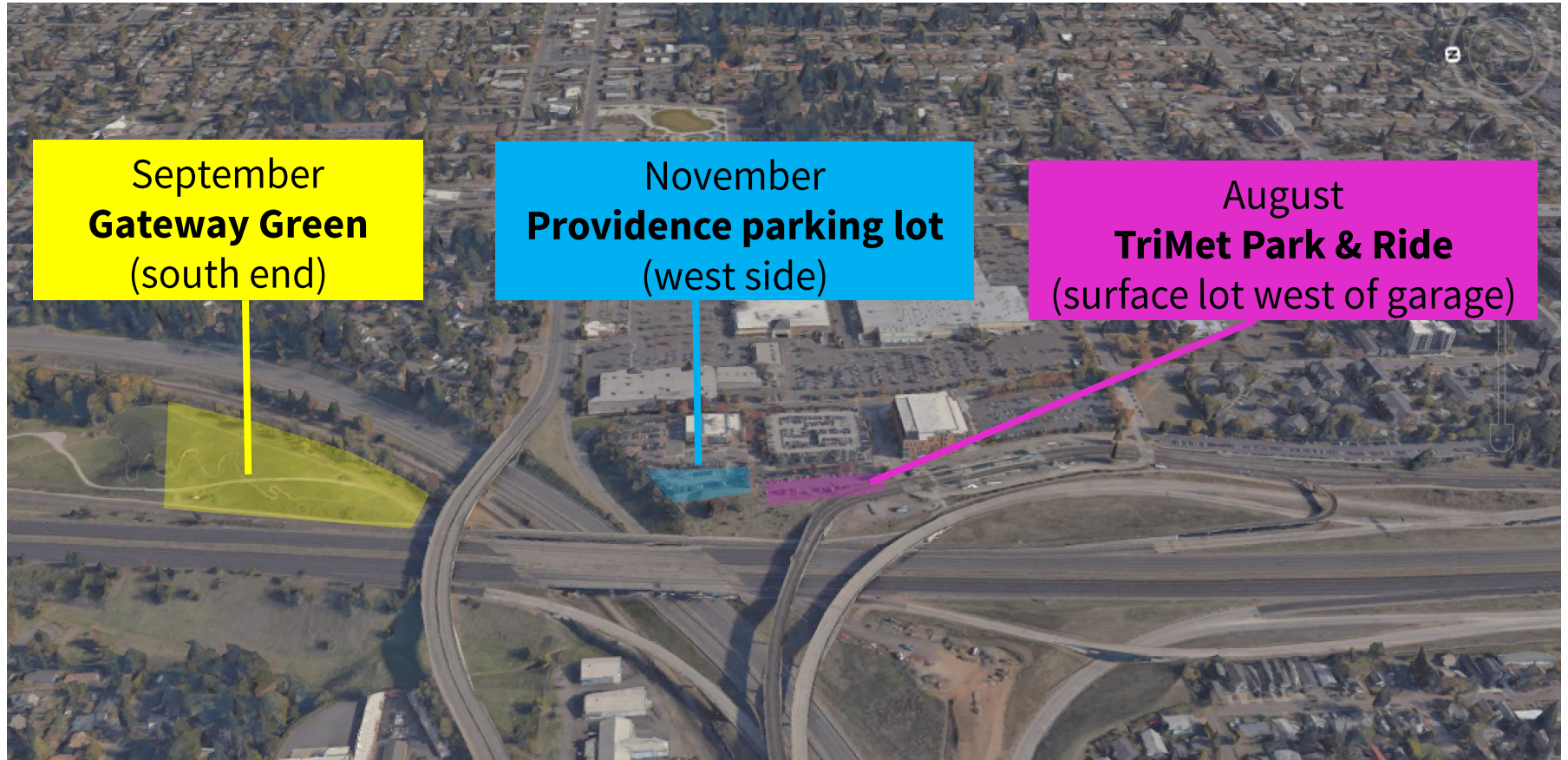
Gateway Area

Aerial view looking south toward the multi-use path and Gateway Green light rail overcrossing



Construction Closures

Starting summer 2021 through 2024

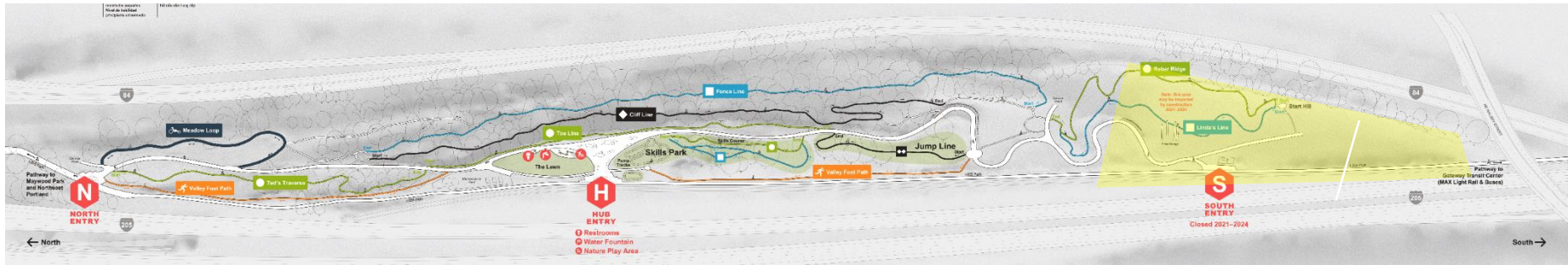


September
Gateway Green
(south end)

November
Providence parking lot
(west side)

August
TriMet Park & Ride
(surface lot west of garage)

Gateway Green Construction Closure



Gateway Green Construction Closure

South end **closures** beginning September 2021 through 2024:

- South entrance
- Upper sections of Linda's Line trail
- Upper sections of Rebar Ridge

Central and north sections of the Gateway Green will remain **OPEN** during construction:

- Jump line
- Skills area
- Asphalt pump track
- Playground
- Concrete speed ring
- "Hub" gathering area
- Single track trails in the woods/north end

PDX

MAX Station at Portland International Airport



Design

AS OF SPRING 2021

40

firms have worked the on project

30

firms are based in the region

24

are certified DBE and Minority Business
Enterprise and Women Business
Enterprise firms

19%

of project design work has been awarded
to DBE firms

TriMet's Construction Ethic

- Safety
- Minimize impacts to neighbors while maximizing construction efficiencies
- Community Affairs staff – liaison for neighbors
 - Gather information about access, operational needs
 - Collaborate with contractor to plan and adjust construction activities
 - Frequent communications; what to expect in advance; on-call 24/7

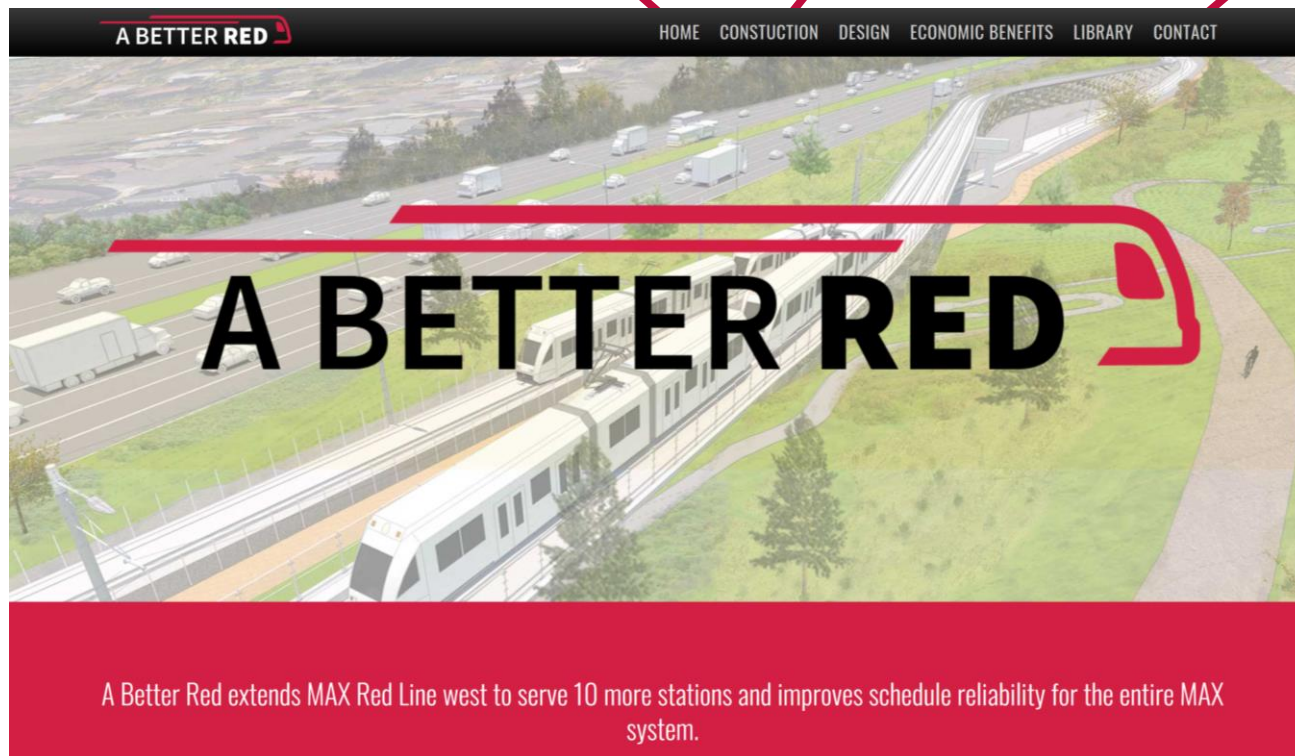


trimet.org/betterred

HOME:
Video with
Gateway flyover

CONSTRUCTION:
Weekly updates

CONTACT:
Sign up for email
updates



What Else to Expect During construction

- MAX service interruptions, with shuttle buses (6)
- Lane closures, including nights on I-84
- Occasional closure of I-84 eastbound Exit 7–Halsey
- Weekend closures of I-84 (2)
- Night closures of westbound I-84 (1-3 weeks)
- Daytime pile driving adjacent to I-84
- Night and weekend construction
- Multi-use path impacts



Better Red Station Area Planning

- FTA grant for transit oriented development (TOD) and station area planning at key Red Line stations
- ECONorthwest leading two-year study
 - Economic analysis
 - Business and resident stabilization
 - Zoning analysis, recommendations
 - Station area plans
- Build on past studies
 - Equitable development outcomes
 - Public-private partnerships

Comments & Questions?

trimet.org/BetterRed

Email: BetterRed@trimet.org

Phone: 503.962.2150

Libby Winter

Email: WinterLi@trimet.org

Cell: 503.983.3930